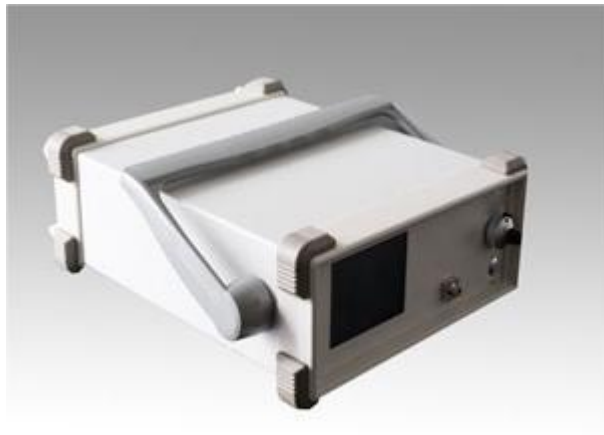


TC-TLS Series Continuously Tunable Laser Light Source

Product Description

TC-TLS type continuous tunable laser light source adopts high performance DFB laser, wavelength tuning range >0.4nm, with high output optical power (10mW), narrow linewidth, high wavelength accuracy and good power stability. It can realize remote control of the instrument and is mainly used in the fields of optical device testing, fiber optic sensing, PMD and PDL measurement, etc.



Features

- Wavelength continuously adjustable
- Output power 10mW
- Narrow line width 3MHz
- Wavelength internally locked
- Can be remotely controlled

Extreme Conditions

Parameter	Symbol	Unit	Minimum Value	Typical Value	Maximum Value
Operating Temperature	Top	°C	-5		55
Storage Temperature	Tst	°C	-40		85
Humidity	RH	%	5		90



Performance Parameter

Parameter		Symbol	Minimum Value	Typical Value	Maximum Value	Unit
Wavelength	C-band	I	1529		1563	nm
	L-band	I	1560		1607	nm
Wavelength Tuning Range				0.5		nm
Wavelength Conversion Speed				50		μs
Tuning Stepper			Continuously adjustable			
Output Optical Power		P _o	6		13	dBm
3dB Spectral Width		DI*	1	3	10	MHz
Side Mode Rejection Ratio		SMSR	40	50		dB
Polarization Extinction Ratio		PEX	20			dB
Relative Noise Intensity		RIN		-145	-135	dB/Hz
Power Stability**		P _{SS}			±0.005	dB/5min
		P _{LS}			±0.01	dB/8h
Isolation at The Output		ISO	30	35		dB
Specification			Desktop,Module optional			
Output Fiber			PMF			
Optical Connectors			FC/PC FC/APC or user specified			

Ordering Information

TC	TLS	X	10	P	XX
	Tunable laser light source	C---1525~1565nm L---1560~1620nm	Power: 05---5mW 10---10mW 20---20mW	Pigtail: P---PMF S---SMF	Fiber optic connectors: FP---FC/PC FA---FC/APC SP---user specified

If you have special needs, please contact our sales staff



Typical Spectrum

